



Braeside Primary School

Honour, Pride and Achievement

Issue 18 Tuesday 18th November 2025

Embrace diversity, realise potential, aim for excellence

Principal's News

Good afternoon everyone

As Principal, my priority is to ensure our school remains a safe, respectful and supportive place for all members of our community, our staff, our students and our families. I want to take a moment to outline the expectations that help us continue to foster the positive environment we all value.

For our staff, I encourage professionalism, compassion and a strong commitment to the wellbeing and learning of every student. Our teachers and support staff work incredibly hard, and it is important that they feel safe, respected and supported in their roles.

For our students, we promote kindness, respect, honesty and responsibility. Every student has the right to learn without disruption and to feel valued and safe at school. Their experiences matter, and we are committed to helping them grow and succeed.

For our parents and community, we genuinely appreciate your involvement and partnership. We ask that all interactions with the school remain respectful and collaborative. Our school is a place of learning, and we want all students, staff and families to feel comfortable and supported when they are here.

I would also like to gently reinforce the importance of seeking clarification if you hear information that seems concerning or unclear. Coming directly to me or a member of the leadership team helps us address matters quickly, prevents misunderstandings and ensures that everyone receives accurate information.

We all share a responsibility to maintain a safe and respectful environment, and every person, students, staff, parents, carers and visitors all have the right to feel secure on school grounds.

By working together and upholding these shared expectations, we continue to build a school community where respect is central, safety is prioritised, and learning can flourish.

Thank you for your ongoing cooperation, support, and commitment to our school.

Donna Shepherdson

Important Dates

2025	November
Assembly - Choir 9.00am	Fri 21st
Kindy Transition Program 2026 Kindy Students 9.00am to 10.30am	Tues 25th
P & C Meeting	Tues 25th
Yr 6 KSHS Transition - all day	Wed 26th
Yr 6 KSHS Transition - all day	Thurs 27th
	December
LAST Kindy Transition Program 2026 Kindy Students 9.00am to 10.30am	Tues 2nd
Kindy Picnic	Thurs 4th
End of Year Concert - 6pm	Mon 15th
Reports home	Mon 15th
Year 6 Graduation Assembly Commencing at 9.30am	Tues 16th
Last day of Term 4	Thurs 18th
School Holidays	Fri 19th

IMPORTANT INFORMATION

Phone: 9821 3500

Website: www.braesideps.wa.edu.au

Email: Braeside.ps@education.wa.edu.au

NEW SCHOOL BANKING DETAILS

Braeside Primary School
Commonwealth Bank
BSB: 066-040 Acct: 19907881

ACKNOWLEDGEMENT OF COUNTRY

We acknowledge that our school is on the traditional lands of the Goreng Noongar people.

We respect their continuing connection to land, water, community and their spiritual relationship to Noon-gar country. We pay respect to the Elders past, present and emerging.

SCHOOL BOARD UPDATE

Update from the Braeside Primary School Board - Term 4, 2025

The final Board meeting of the year saw members getting an update from Mrs Shep on the outcomes of the one-year School Review and the resulting 'what's next' meeting. It sounds like there are lots of ideas for how the school can move forward being explored, with a particular focus on literacy and on the environment in which our children and teachers spend so much of their time. Mrs Shep also took us through some of the staffing and funding for 2026, details of which will be shared with everyone soon.

The priority of increasing the profile and understanding of the role the Board plays in the governance of Braeside Primary School will continue next year. We're planning to provide more information on the Board members who are representing various parts of our school community and are looking at how we can make it easier for you to get in touch with us. So that we can provide you with the information you need to understand how we fit in with the strategic direction and oversight of the school, we want to hear from you - what would you like to know about the Board and how it works? Please contact the school or a Board member with any questions.

On behalf of the Board, thank you to all our teachers and staff for your dedication and commitment this year. Thank you also to the P&C for the work that you've put in, and to all members of our school community for your support. The end of the school year is always busy and seems to fly by; hopefully you all enjoy a lovely and safe break during the holidays.

Jo Steel,

School Board Chair and Parent Representative



Department of
Education

Shaping the future

Connect and Respect

Every student, staff member, parent or carer has the right to feel safe and be safe in our schools.

We all share a responsibility for providing a safe, supportive and productive environment, free from bullying, harassment, discrimination and violence.

What we can all expect:



mutual
respect



good
behaviour



open
communication



respect for each
other's time

We will not tolerate:



offensive, insulting
or aggressive
language



malicious or
judgemental
gossip



using
social media
disrespectfully



any form
of violence

Shared and respectful expectations and values will enable us to work together in the best interests of our children.

SCHOOL NURSE

Head lice

Head lice are tiny insect parasites that live on your head and feed on your scalp. Head lice are spread by head-to-head contact with another person who has head lice. This kind of contact includes doing group work, playing, or hugging.



Tips for preventing head lice

- **Check your child's hair regularly** for head lice and eggs ('nits'). Use a metal fine tooth 'nit' comb and plenty of hair conditioner applied to the dry hair, to make the task easier and more effective. To help children sit still for this, offer distracting activities, e.g. play a favourite video, provide games, iPad apps, offer a head massage.
- **Tie long hair back.** Braid long hair and/or put it up if possible.
- **Consider applying hair gel or mousse.** These do not prevent or repel lice but may help to keep stray hair strands from contact with other heads.
- **Avoid sharing combs or brushes.**
- **Remind your child to avoid head-to-head contact** with other children, e.g. when working at the computer with others, or when playing, or hugging.

If your child has head lice please notify the teacher.

For more information:

Access the fact sheet [Head lice – What parents need to know](#) (Healthy WA)

Visit: [Head lice](#) (Healthy WA)

Visit [Head lice & nits: children & teens](#) (Raising Children Network)

COMPASS AND ATTENDANCE



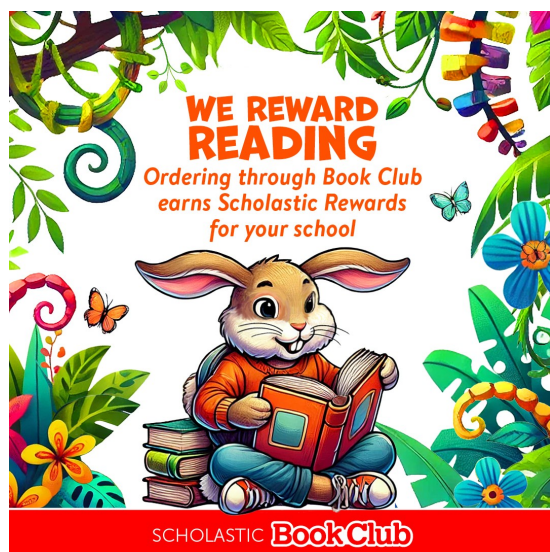
Compass is up and running as our new software for the school. Attendance is part of Compass and you will receive a text message if your child/ren are absent. Please click on the link in the text message to reply and advise of the absence.

The APP is also available for your phone, please download and choose Braeside Primary School for your child's school. You can add students to have all of your children on the one account. An email was sent in early September with your linking codes, if you need the email to be resent, please contact the office and also please check the email is correct and updated.



Attendance Letters have gone home today, please complete the forms for unexplained absences and return to the office. We need this information to update Compass for your child's absences. Thank you for your assistance in returning completed forms, we appreciate your quick response.

SCHOLASTIC BOOK CLUB



Issue 8
Due
26th Nov



HATS & WATERBOTTLES FOR TERM 4

Term 4 is essential for students to have water bottles and a hat, can you please check that your child/ren has a school hat to wear during recess, lunch and sport and also to ensure they have a water bottle to drink from throughout the day and during sport.

Please name the hats and water bottles, so we can reunite when they are misplaced or lost. Thank you, we appreciate your assistance.



SWIMMING LESSONS 2026



Swimming Lessons for 2026 will now be in Term 4, Weeks 7-8, rather than Term 1 next year.

Notes will be coming out in Term 4, 2026 with full details.

SCOUTS CHRISTMAS FOOD DRIVE



Katanning Scout group are supporting the Christmas Food Drive this year and have a box in the School Office for collecting non-perishable food.

If you would like to assist the Scouts and support their food drive, please bring items to place in the box.

Your support is greatly appreciated.

BRAESIDE PRIMARY SCHOOL



KINDY TRANSITION PROGRAM





Transport available to and from school

Tuesdays in Term 4

Our learning program is based on a set of evidence-based teaching and learning strategies using play to prepare children for kindergarten and the school years ahead.

Through the program, children develop:

- Social emotional skills
- Self-care and responsibility
- Fine and gross motor skills
- Cognitive development
- Language skills
- Independence

Session dates:

- 21st October 9-10.30am
- 28th October 9-10.30 am
- 4th November 9-10.30 am
- 11th November 9-10.30 am
- 18th November, Kindy Orientation 9-10.30am
- 25th November 9-10.30am
- 2nd December 9-10.30

You will be learning with our experienced Early Childhood Teacher, Mialanda Love.

MORE INFORMATION ➔

Please call the school on 9821 3500 or email mialandalove@education.wa.edu.au

COMMUNITY NOTICES

2026 January Holiday Head Start Courses

Year 5

Get ready for the ASET/GATE test

ACADEMIC TASK FORCE
Achieve Success at School

ASET/GATE Preparation Classes

Early Bird SAVE 10%
Enrol with full payment by Monday December 8th, 2025 to SAVE 10%

Enrol Today

Boost your school results
Join over 200,000 students who have improved their academic performance and results with Academic Task Force.

Get a head start to your ASET/GATE
We have a team of highly qualified, experienced teachers ready to help maximise your test performance

Achieve Success
In 2024, Academic Task Force students achieved:
1 Beazley Medal, 9 General Exhibitions,
3 Subject Exhibitions, 37 Certificates of Excellence,
131 Certificates of Distinction and 240 Certificates of Merit.

★★★★★
"My daughter enjoyed every aspect of the Program, and was heartily thankful to me as her parent for enrolling her in the Program. Well done, may I encourage you in this quality service you provide." - MC, Parent

Academic Associates and Academic Task Force are part of the Academic Group.
Enrolment Terms and Conditions: Please see our website for our policy on payments and refunds.
Other subjects and times may become available, classes may be cancelled or changed depending on demand. See website for any changes.

Enrol Online:
www.academicgroup.com.au

Call: 9314 9500
learn@academicgroup.com.au

2026 January Holidays Head Start Courses

January Holidays - 6 hrs/subject - 3 hrs each day, over 2 consecutive days

Give ASET/GATE a go

What is ASET/GATE?

The GATE (Gifted and Talented Entrance) exam — now known as the Academic Selective Entrance Test (ASET) — helps identify students with exceptional academic potential for Gifted and Talented programs in selective public high schools across Western Australia.

What Does the Test Involve?

You'll get to show your strengths in four key areas:

- 📖 **Reading Comprehension** — understanding and interpreting written texts
- ✍️ **Communicating Ideas in Writing** — expressing your ideas clearly and creatively
- 🧮 **Quantitative Reasoning** — solving numerical and logical problems
- 🧠 **Abstract Reasoning** — identifying patterns and thinking outside the box

When Do You Sit the Test?

- 📅 The selection process starts in Year 5
- 📅 Testing takes place in Year 6
- 📅 Successful students begin their Gifted and Talented program in Year 7

ALL SAINTS' COLLEGE

Thursday 15th January - Friday 16th January

9am - 12noon

- ☐ ASET/GATE & Scholarship Preparation - Maths Problem Solving and Abstract Reasoning

12.30pm - 3.30pm

- ☐ ASET/GATE & Scholarship Preparation - Reading Comprehension and Creative Writing

CHURCHLANDS SHS

Tuesday 27th January - Wednesday 28th January

9am - 12noon

- ☐ ASET/GATE & Scholarship Preparation - Maths Problem Solving and Abstract Reasoning

12.30pm - 3.30pm

- ☐ ASET/GATE & Scholarship Preparation - Reading Comprehension and Creative Writing



SCAN ME

Enrol online:
academicgroup.com.au

✓ Only \$180 for a 6 hour course

Early Bird SAVE 10%
Enrol with full payment by Monday 8th Dec to SAVE 10%

Enrol Online:
www.academicgroup.com.au

Call: 9314 9500
learn@academicgroup.com.au

COMMUNITY NOTICES

Get up to \$500 for education costs

Achieve a savings goal for 10 months, and **ANZ will match it up to \$500.**

To be eligible, you need to meet these requirements:



18 years or older



A regular income (you or your partner)



Attend free online financial education workshops



Are studying yourself or have a child at school, or starting next year



Current Health Care or Pensioner Concession Card



Saverplus.org.au
1300 610 355



Saver Plus was developed by ANZ and the Brotherhood of St Laurence and is delivered in partnership with The Smith Family and Berry Street. It is funded by ANZ and Department of Social Services.

COMBINED CHURCHES OF KATANNING
INVITES YOU TO JOIN US FOR
CAROLS IN THE PARK
SUNDAY 7TH DECEMBER
PIESSE PARK

WHAT TO EXPECT:

5.00PM KIDS ACTIVITIES
ENTERTAINMENT
FOOD
7.00PM CAROLS

Get into the Christmas spirit with an evening filled with the melodies of classic Christmas carols

Come along dressed as your favourite nativity character and receive a gift.
BYO blankets, table, chairs.
Don't forget to dress warmly as it can get cold.
Bring non-perishable food items for those in need.

FREE EVENT

Vendors will have food and drink available for purchase.
There will be some free and low cost options available.

Generously Sponsored by
Shire of Katanning
Part of the Green Southern



OPENING TIMES!

Term 4

NOT A MEMBER? NOT A PROBLEM. COME AND CHECK US OUT!

Friday 24th October (after story time) 11am-12pm

Friday 31st October (after story time) 11am-12pm

Saturday 1st November 10:30am-12pm

Friday 14th November (after story time) 11am-12pm

Friday 5th December (after story time) 11am-12pm

Saturday 6th December 10:30am-12pm

NEW DATE! Saturday 13th December 10:30am-12pm

katanningtoylibrary@outlook.com

Address: Community Group Room, 16 Austral Terrace, Katanning



ndis
ndis.gov.au

Meet the National Disability Insurance Agency Staff

Thursday 20th November

10:00am to 12:00pm

Katanning Leisure Centre

4 Pemble Street, Katanning

Did you know the NDIA can help you if you have trouble with walking, talking, listening, seeing or thinking?

If you want to know more about NDIS, the team will answer your questions and speak about what we do:



What is the NDIS?



What is a Disability?



How to get NDIS?



What are supports and services?

Connecting Katanning in partnership with our Partners in Community

